



THE LITTLE ENGINE THAT COULD... said the Big...
Robbie McEwell was attuned to that spirit Tuesday night when he dressed up as Uncle Sam for the Children's Parade. He won first prize in the Kiwanis judging of three-, four- and five-year-olds.



THE LITTLE ENGINE THAT COULD... said the Big...
Robbie McEwell was attuned to that spirit Tuesday night when he dressed up as Uncle Sam for the Children's Parade. He won first prize in the Kiwanis judging of three-, four- and five-year-olds.



THE LITTLE ENGINE THAT COULD... said the Big...
Robbie McEwell was attuned to that spirit Tuesday night when he dressed up as Uncle Sam for the Children's Parade. He won first prize in the Kiwanis judging of three-, four- and five-year-olds.

WEATHER

Time	Temp	Wind	Clouds
8:00 a.m.	68	10	100
10:00 a.m.	72	15	100
12:00 p.m.	75	20	100
2:00 p.m.	78	25	100
4:00 p.m.	80	30	100
6:00 p.m.	78	25	100
8:00 p.m.	75	20	100

The Chelsea Standard

QUOTE
"Inconsistency with ourselves is the great weakness of human nature."
—Joseph Addison.

ONE HUNDRED FOURTH YEAR—No. 11 16 Pages This Week CHELSEA, MICHIGAN, THURSDAY, AUGUST 30, 1973 15c per copy SUBSCRIPTION: \$4.00 PER YEAR

THREE MORE DAYS FOR FAIR

Livestock Sale Set for Thursday

The presentation of Showmanship Awards and the Livestock Sale top the list of Chelsea Community Fair events this evening. Although the Fair has been in full swing since Tuesday, there's still lots to do and see.

The Showmanship Awards will be given out with winning smiles by 1973 Fair Queen Jodi Daniels and her court at 7:10 p.m. Price Brothers auctioneers will take over with emcee Herman Kuenn's permission shortly after 7:20. They will conduct the annual Livestock Sale.

Last year this ritual brought \$1.15 a pound for the grand champion steer. This was the same bid that took the champ the year before, so in these times of inflation Joe Merkel of Wolverine Bar got a bargain.

Last year's Reserve Champion owned by Larry Hopkins went for 67 cents a pound. 1971's reserve champion had brought 75 cents. The bid for the grand champion sheep bettered 1971's record, however. Gene Shoemaker of Huffy Market bought Tim Grau's lamb for \$2.25 a pound. The winning sheep was worth \$2.20 in 1971.

Because of the tight meat supply this month, prices are expected to be much higher than a year ago.

The excitement of high bidding at the auction will be capped by the ATV event that is scheduled to follow. This will be the first year Chelsea Fair Committee has arranged such an activity.

Friday will be taken up with the ever-popular tractor pulling contests. The lightweights will begin their tugging at 10 a.m. after weighing in at Chelsea Milling Co. at 8 a.m.

That evening the big boys will



LOOKING LOVELY in spite of the heat and the pressure of the occasion Tuesday evening were the six 1973 Fair Queen Candidates and Jodi Blass, 1972 Fair Queen. All managed to entertain the capacity crowd in the grandstand with their talent demonstrations, but it was Jodi Daniels' "Horton Hatches the Egg" that won the judges' favor. Jodi was crowned Queen with runner-up honors going to Sherry Moore, the sophomore class nominee. Sherry delivered an original poem for her portion of the talent contest.

Jodi Daniels Is Fair Queen

In spite of the energy-sapping heat and humidity, a good portion of the community turned out Tuesday evening to kick off Chelsea Community Fair week.

Following the Children's Parade down Main St. to the ribbon cutting at the fairgrounds, the crowd took in the exhibits and rides at the fair. The evening culminated in the crowning of Miss Jodi Daniels as 1973 Fair Queen.

The festivities started in the municipal parking lot where hundreds of children participating in the parade gathered according to age groups. Twelve judges from the Kiwanis Club, which organizes the parade each year, chose the best entries in four divisions—three-, four- and five-year-olds, six-, seven- and eight-year-olds, nine-, 10-, 11-, and 12-year-olds, and miscellaneous.

Taking first place in the youngest group was Robbie McDowell who was decked out as a red, white and blue Uncle Sam. Robbie Riemenschneider earned second place prize as an Ice Cream Man and third prize went to Jeanette and Julie Koch and Brenda and Beth Kenney who made and rode in the Little Engine That Could. Todd Nagle earned honorable mention in the youngest group for his Mexican costume.

Dressed as Little Red Riding Hood and the wolf, Danny and Michelle Alexander were first prize winners in the six-, seven- and eight-year-old division. Sue Riemenschneider was second as Mrs. Clean and Button the horse-bike and Darren Buss took third.

In the older group, Mark Juergens was first-prize winner with his large Milton the Toaster on wheels. Dawn McDowell, a second and Jane Verwey, dressed in layers of pink crepe paper, was third.

In the miscellaneous group, the Three Little Pigs and the Big Bad Wolf won first-place honors. They were portrayed by Dawn, Becky, Dale and Carmen Scripser. The Little Rascals, impersonated by Barb Proctor, Phillip Sweet, Ricki Proctor and Maroonet Sweet won second prize. Third place went to Jennifer and Tracy Cattell and Patrick Villeneuve who urged onlookers to "think chicken."

After the parade reached the fairgrounds the traditional ribbon cutting ceremony was carried out by 1972 Fair Queen Jodi Blass looking glamorous in a shimmering gown. She was assisted by Fair Board President Allen Broesamle and Village President Mac Fulks.

The Fair Kitchen was the first stop for many. Good smells came from behind the counter and patrons were greeted with cherry flowers arrangements on every table. Members of the Kiwanis Club helped serve the food.

Soon the water polo games began at the arena. Many matches later, the Chelsea team emerged soaked but victorious. For the first time in the five years the rivalry has been maintained. Chelsea earned the nozzle trophy. Ann Arbor was the previous recipient.

CHS Band Prepares for Fair Parade

Band uniforms are being issued this coming week. Can football season be far behind?

Band members may pick up uniforms Tuesday between 8 a.m. and noon, or Wednesday and Thursday during registration. The uniforms will be issued in the uniform room behind the stage at the high school.

Those wishing to pick up uniforms must bring \$1 for spats. Those who have white gloves need not buy new ones but those without must bring another dollar for gloves.

Dressed in a summer uniform of white shirts, white shorts, white shoes and socks, the band will assemble Saturday at 12:30 for the 1 p.m. Chelsea Community Fair Parade.

The band will form facing east (Continued on page three)

Nine-Period Day Starting in Schools

New teachers, new courses and a new nine-period schedule will make the 1973-74 school year a new experience, even for worldly-wise seniors when classes begin Wednesday, Sept. 5.

Classes will be offered for the first time in both Spanish and German. Other new courses will be offered in anthropology, geography, 20th century history, blueprint reading, industrial processes, psychology, child development and home planning.

Changes in the vocational program will allow graphic arts and office procedures to be scheduled for a double period each day. Students will also be given credit for what they learn outside the classroom in work study programs. They will be released from school early to take on work-study jobs.

The most ambitious change in the vocational education curriculum is a new building trades program which will give senior boys the opportunity to build a house.

The new nine-period day, instituted in accord with a recommendation offered by the Ad Hoc Citizen Advisory Committee formed to consider the number of periods in the high school day, provides the extra classrooms needed for the new classes offered this year.

Each period will be 43 minutes in length, seven minutes less than in the past.

Several of the additions to the high school faculty this year were hired to implement the new programs. William Chandler, for example, has been hired to co-ordinate the work-study program. A (Continued on page six)



CHELSEA COMMUNITY FAIR QUEEN, 1973: Jodi Daniels weathered such trials as an inadequate microphone and public address system, vicious mosquitos and muggy weather with the cool and calm of a veteran Queen candidate and came away with the crown. The daughter of Mr. and Mrs. Robert Daniels, Jodi was the junior class nominee.



GRAND OPENING: The Fair was officially opened Tuesday evening when Fair Board President Allen Broesamle (left) and Village President Mac Fulks assisted 1972 Fair Queen Jodi Blass in cutting the ribbon at the arena. The hot weather didn't spoil the enthusiasm that charged the event. As soon as the ribbon was cut, the children's parade poured into the grounds, bringing parents and spectators with them.



AT THE CHILDREN'S PARADE was the purpose of this entry in the annual parade group to families viewing a judging before the children's parade. These children were the double held shot by Frank and Barbara, a good Polish influence played the children. They are third prize.



BEKITTIN' TIKITIN' COWBOY: Picking a six-shooter and riding in Pake, Darren Ross was one of many who took part in Tuesday evening's Children's Parade which was a success, as always, because of the Kiwanis Club's preparations and supervision. After judging had taken place in the municipal parking lot, the parade poured out into Main St. following a fire engine. Another fire truck brought up the rear. Darren won third prize in the middle age group.



SUE RIEMENSCHNEIDER lived up to her German heritage at the Children's Parade that opened Chelsea Fair activities Tuesday evening with her impersonation of Mrs. Clean. Her shiny clean bike, apron and dust mop took second prize in the six-, seven- and eight-year-old division.

Jiffy Mixers Win Their Own Invitational Softball Tourney

Excitement flourished as Jiffy Mix squeaked by Wolverine Bar, 0, Saturday night to win the Chelsea Invitational Tournament. Jiffy had organized the tournament that pitted eight teams in contests Thursday, Friday and Saturday.

The moment of truth in this double elimination tournament came when Jiffy Mix defeated Wolverine Bar twice, first, 7-0, and then 1-0. A memorable performance was given by Dick McCalla, Jiffy's pitcher in the last three games.

Other scores in the tournament were: Wolverine 10, St. Paul's 8; Wolverine 5, Jiffy Mix 4; Wolverine 10, Westgate 8; Jiffy Mix 10, Methodist Home, 0; Jiffy Mix 0, Sweepsters, 4; Jiffy Mix 10, St. Paul's 5; and Jiffy Mix 10, Westgate, 5. Chelsea Merchants were defeated by Westgate, 23-1, Friday night.

The runner-up trophy went to the Wolverine Bar team.

Marching Band Prepares

(Continued from page one)

In the municipal parking lot in order to file out into E. Middle St.

Warren Mayer, band director, will be at the high school at noon that day to open the band room so that those who need to pick up their instruments may do so.

SOUTHERN BOY MANOR MOTEL

Efficiency Units - By Day, Week, or Month

13190 M-52

(2 miles south of Stockbridge)

PHONE (517) 851-4213

Jiffy market

Big Enough To

Serve You . . . Small Enough To Know You!

TOP VALUE STAMPS - GUARANTEED SATISFACTION - COURTEOUS SERVICE



FULL LINE SUPERMARKET

BEER - WINE - LIQUOR
LOTTERY TICKETS
MARATHON GAS PUMPS
AUTHORIZED
FOOD STAMP STORE

Open 7 Days A Week

7 a.m. to 10 p.m.

Corner Sibley & Werkner Rds.

PHONE 475-1701

Sale Prices Effective

Thurs., Aug. 30 thru Sun., Sept. 2



SIGN UP NOW!

For

GUITAR & BANJO LESSONS

At

WASHTENAW COMMUNITY COLLEGE

Class instruction in beginning Guitar & Banjo

starting September 19 and 20.

Fee: \$25.00* for 12 lessons.

Register first night of class:

Guitar—Wed., Sept. 19 Lec. 1, Exact Science Bldg.

Banjo—Thurs., Sept. 20 Lec. 1, Exact Science Bldg.

ENROLLMENT LIMITED - INQUIRE NOW

For information, call 971-6300, Ext. 451.

*In-district tuition.

Best Band Camp Yet Says Director

"I've never felt so good about one as I do about this year's band camp," says Warren Mayer, band director. He says a great deal of credit for the successful week goes to the chaperones and Mr. and Mrs. Mel Leach, camp directors.

"The kids had a great attitude and worked hard," says Mayer. "It just went well."

The practices were devoted in large part to preparation of the numbers that will be put on at Chelsea for the first football game.

At the end of the week the campers voted on the best all-around boy and girl camper, new titles initiated this year. Dave Lahon earned the boy's title and Phyllis Jedeke earned the girl's.

Anthony Houle, a freshman, was voted best marcher and Duane Luick was voted best bandman.

The seniors were given the authority to pick the best freshman band member. Anthony Houle and Kim Brown tied for that honor. The squad the staff dubbed best is made up of Leader Duane Luick, Mark Wolter, Rene Papo and Rick Heller. By coincidence they make up coronet squad number one.

The chaperones who accompanied the campers to Camp Maplehurst were Mr. and Mrs. Mel Leach, Mr. and Mrs. Frank Sweeney, Mr. and Mrs. Art Paul, Mr. and Mrs. Art Stoll, Charles Winans, Andy Blackwell, Mrs. Earl Kuhl, Henry Harat, Mrs. Paul Patrick and Mrs. Richard Schulz.

VILLAGE OF CHELSEA PLANNED USE REPORT Of Federal Revenue Sharing Funds

The government of Chelsea, Michigan plans to expend its revenue sharing allocation of the entitlement period beginning Jan. 1, 1974 and ending June 30, 1974 in the following manner based upon an estimated total of \$37,906. (Account No. 23-2-081-002). Form No. 3229 filed with Department of the Treasury, Office of Revenue Sharing, 1900 Pennsylvania Avenue, N.W., Washington, D.C. 20226.

(K) EXECUTIVE PROPOSAL. Check this block if this plan is based on an executive proposal.

(L) DEBT. How will the availability of revenue sharing funds affect the borrowing requirements of your jurisdiction?

☐ Avoid Debt Increase ☐ No Effect
☐ Lessen Debt Increase ☐ Too soon to predict effect.

(M) TAXES. In which of the following manners is it expected that the availability of Revenue Sharing Funds will affect the tax levels of your jurisdiction? Check as many as apply.

☐ Will enable reducing rate of major tax
☒ Will prevent increase in rate of major tax
☐ Will prevent enacting a new major tax
☐ Will reduce amount of rate increase of a major tax
☐ No effect on tax levels
☐ Too soon to predict effect

OPERATING/MAINTENANCE EXPENDITURES

Priority Expenditures Categories (A)	Planned Expenditures (B)	Percent Planned For Existing Services (C)	Percent Planned For New or Expanded Services (D)
1 Public Safety	\$1,971.00	100%	100%
2 Environmental Protection	\$4,055.00	100%	100%
3 Public Transportation			
4 Health			
5 Recreation	\$2,615.00	100%	
6 Libraries			
7 Social Services for Aged & Poor			
8 Financial Administration			
9 Total Planned Operating/Maintenance Expenditures	\$8,641.00		

CAPITAL EXPENDITURES

Expenditures Categories (E)	Planned Expenditures (F)	Percent Planned For Construction (G)	Percent Planned For Land Acquisition (H)	Percent Planned For Debt Retirement (I)
10 Multi-Purpose and General Govt.				
11 Education				
12 Health				
13 Transportation				
14 Social Development				
15 Housing & Community Development				
16 Economic Development				
17 Environmental Conservation				
18 Public Safety	\$14,100.00	10%	84%	
19 Recreation Culture				
20 Recreation	\$3,335.00	100%		
21 Others Public Works	\$11,830.00	45%	55%	
22 Others (Specify)				
23 Others (Specify)				
24 Others (Specify)				
25 Total Planned Capital Expenditures	\$29,265.00			

I have advised a local newspaper and the news media of the contents of this report. Furthermore I have records documenting the con scrutiny.

A. E. Fulks
Chelsea Village Clerk

Date Published: Thursday, August 30, 1973
Name of Newspaper: The Chelsea Standard.

COUNTRY FAIR

WHITE BREAD . 4 1-Lb., 4-Oz. Loaves 99¢

RISDON'S HOMOGENIZED

LO-FAT MILK gallon 89¢

U. S. GRADE A WHITE

FRESH EGGS Med Size Doz. 69¢

MICHIGAN U. S. No. 1 SUNNY CREST FARMS

POTATOES 8 Lb. Bag 69¢

FROSTIE, ROOT BEER, ORANGE, AND GRAPE CRUSH OR

7-UP Your Choice 4 Flavors 12-Oz. Cans 6 pac 69¢

CRISPY FLAKE OR HOME TOWN

POTATO CHIPS 12-Oz. Pkg. 49¢

ALL BRANDS & SIZES — CHECK OUR PRICES ANYWHERE!!

CIGARETTES Your Choice Per Carton \$3.39

U.S.D.A. CHOICE — All beef priced at March 29, 1973 retail prices.

BEEF ALL CUTS AVAILABLE

Because of our high cost of buying and the continued government beef retail price freeze, all cuts will be limited in quantity to all customers.

BY GIVING
TOP
VALUE
STAMPS
WE SHARE



Worth 100 EXTRA

This coupon good for 100 Free Top Value Stamps with any purchase at JIFFY MARKET who gives Top Value Stamps. Coupon void after Sept. 2, 1973.

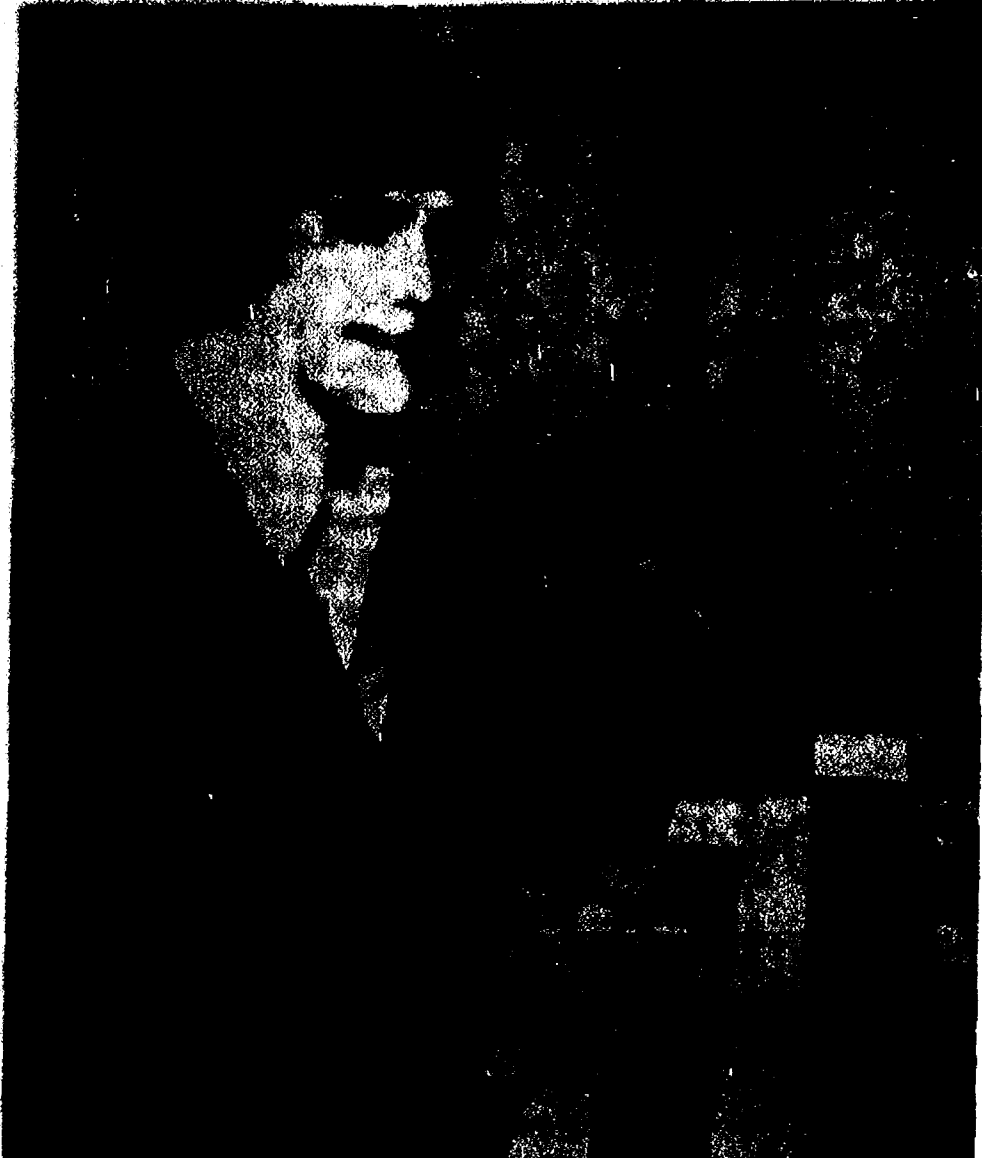


Limit one coupon to a customer per visit. (This offer void in any state or municipality where prohibited taxed or otherwise restricted.)

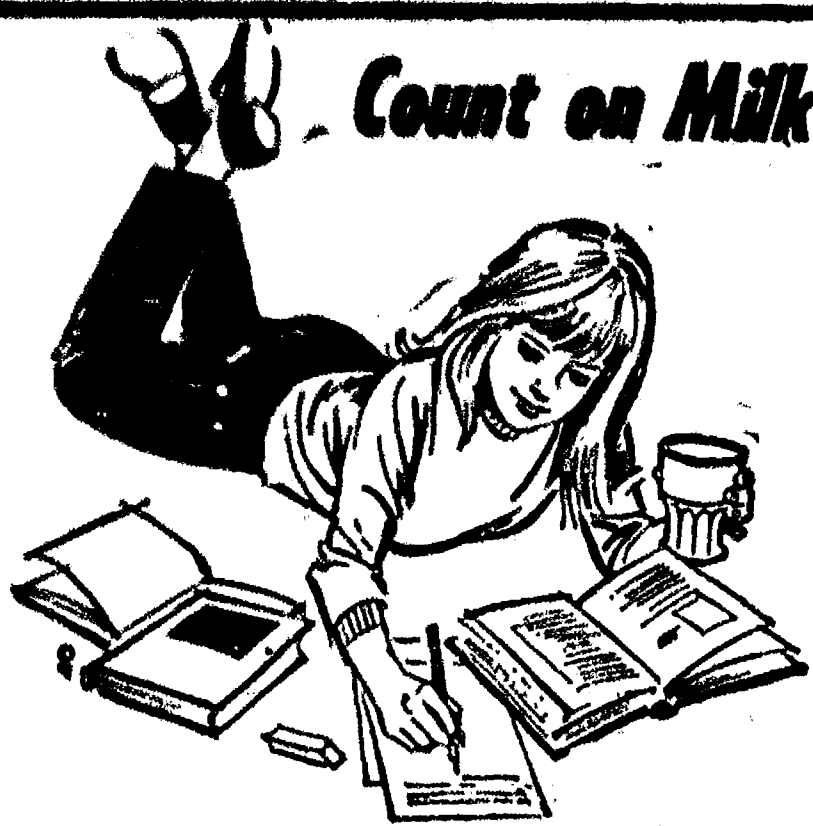
Top Value Stamps

CHELSEA'S JIFFY MARKET FREE COUPON

Mich. State Lottery Tickets - Fresh Meats - Produce - Groceries - Beer - Wine - Liquor



YOU NAME IT, HE CAN PLAY IT: Rarely is such an abundance of talent manifested in so young a person as Chris Anderson. At the age of 17, he can sing and play just about everything from 1930s standards to the popular and country and western songs heard today. Spend a relaxing interlude with him Saturday night when he entertains as one of four acts featured at the fairgrounds at the conclusion of fair week. Shows will begin at 8 and 10 p.m.



For a real energy pick-up whenever you need it... for the enjoyment that comes from a drink that tastes great as it refreshes you... count on milk! Make it a delicious part of your day, every day. Call us for regular home delivery.

Hickory Ridge Farm Dairy
(Successor to Weinberg Dairy)
Stockbridge, Mich. Phone (517) 851-3000

personalized
MATCHES

with name or initials
imprinted

48-HOUR SERVICE

When Requested

Yellow - Green - Blue

Reg. \$3.00 Value **\$2.00**
50 Books

METALLIC

Gold - Silver - Light Green

Reg. \$3.50 Value **\$2.50**
50 Books

NAPKINS

Personalized with
your name or initials.
(Makes a nice gift, too!)

100 for \$3.25

Luncheon or Beverage sizes.
Choice of several colors.

The Chelsea Standard

300 North Main Street
PHONE 475-1371

+ Services in Our Churches +

CONGREGATIONAL CHURCH
(United Church of Christ)
The Rev. Carl Schwarm, Pastor
Sunday, Sept. 2—
10:00 a.m.—Sunday school and
worship service. Guest minister,
the Rev. William Duniform.

ZION LUTHERAN CHURCH
Corner of Fletcher, Waters Rds.
(Rogers Corners)
The Rev. John R. Morris, Pastor
Sunday, Sept. 2—
Resume regular schedule.
9:00 a.m.—Sunday school.
10:15 a.m.—Worship. Holy
Communion.

Wednesday, Sept. 5—
1:30 p.m.—Lydia Circle at home
of Frieda Schneider.
7:45 p.m.—Martha Circle at Son-
ja Wackenhut's.

**VILLAGE UNITED METHODIST
CHURCH OF WATERLOO**
8118 Washington St.
The Rev. Altha Barnes, Pastor
Every Sunday—
10:00 a.m.—Sunday school.
11:15 a.m.—Morning worship.

**BETHEL EVANGELICAL AND
REFORMED CHURCH**
(United Church of Christ)
Freedom Township
The Rev. Roman A. Reineck
Every Sunday—
10:00 a.m.—Worship.

**ST. JACOB EVANGELICAL
LUTHERAN CHURCH**
12501 Rietmiller Rd., Grass Lake
The Rev. Andrew Bloom, Pastor
Every Sunday—
9:00 a.m.—Worship service.
10:15 a.m.—Livine services.

FIRST ASSEMBLY OF GOD
The Rev. Thode B. Thodeson
Pastor
Every Sunday—
9:45 a.m.—Sunday school.
11:00 a.m.—Worship service.
6:00 p.m.—Youth Service.
7:00 p.m.—Evangelistic service

Every Wednesday—
10:00 a.m.—Ladies Bible Study.
7:00 p.m.—Midweek services.

**WATERLOO
FIRST UNITED METHODIST
Church**
Parks and Territorial Rds.
The Rev. Altha Barnes, Pastor
Every Sunday—
9:15 a.m.—Morning worship.

BAHA'I FIRESIDE
Every Thursday—
8:00 p.m.—At the home of Toby
Peterson, 705 S. Main St. Anyone
wishing to learn about the Baha'i
faith is welcome.

**ST. JOHN'S EVANGELICAL
AND REFORMED CHURCH**
(United Church of Christ)
Rogers Corners
The Rev. Richard Campbell, Pastor
Every Sunday—
9:30 a.m.—Sunday school.
10:30 a.m.—Morning worship.

**ST. JOHN'S EVANGELICAL
AND REFORMED CHURCH**
(United Church of Christ)
Francisco
Every Sunday—
10:00 a.m.—Worship service.
10:20 a.m.—Sunday school.

**OUR SAVIOUR LUTHERAN
CHURCH**
The Rev. William H. Keller,
Pastor
1515 S. Main, Chelsea
Each Sunday—
8:00 a.m.—Sunday school.
10:30 a.m.—Worship service.

YES
WE ARE MAKING
LONG-TERM FARM
REAL ESTATE
LOANS

SEE US

**Federal
LAND BANK
Association**

P. O. Box 0006
Ph. 769-2411 3645 Jackson Rd.
Ann Arbor, Mich. 48108

NOTICE OF PUBLIC HEARING ON SYLVAN TOWNSHIP MASTER DEVELOPMENT PLAN

Take notice that the Sylvan Township Planning Commission shall hold a public hearing on Monday, October 1, 1973 at 7:30 o'clock, p.m. in the Sylvan Township Hall, West Middle Street, Chelsea, Michigan, for the consideration of a Master Development Plan for Sylvan Township and a zoning ordinance to be adopted pursuant to said plan. Copies of the proposed Master Development Plan may be inspected at the Washtenaw County Planning Commission, Washtenaw County Building, Ann Arbor, Michigan and at the office of the Sylvan Township Clerk, Daniel Murphy, Chelsea, Michigan.

Sylvan Township Planning Commission
James L. Black, Secretary

**ST. THOMAS
EVANGELICAL LUTHERAN**
Ellsworth and Haab Rds.
The Rev. Daniel L. Mattson, Pastor
Sunday, Sept. 2—
10:00 a.m.—Worship service.
11:00 a.m.—Sunday school and
Bible class.

**FIRST UNITED
METHODIST CHURCH**
Thursday, Aug. 30—
Pastor returns from Pastor's
school.
Sunday, Sept. 2—
10:00 a.m.—Worship service.
Church school, nursery through
second grade.

**FIRST CHURCH OF CHRIST,
SCIENTIST**
1883 Washtenaw Ave., Ann Arbor
Every Sunday—
10:30 a.m.—Sunday school;
morning service.

GREGORY BAPTIST CHURCH
The Rev. Grant Lapham, Pastor
Every Sunday—
10:00 a.m.—Worship.
10:00 a.m.—Sunday school.
7:30 p.m.—Evening worship
service.

**ST. PAUL
UNITED CHURCH OF CHRIST**
The Rev. Warner Siebert, Pastor
Sunday, Sept. 2—
9:00 a.m.—Worship and church
school. Sermon title: "Jonah: Plea
for Universalism."
Tuesday, Sept. 4—
8:00 p.m.—Board of Christian
Education.

Wednesday, Sept. 5—
7:15 p.m.—High School Choir
8:15 p.m.—Chancel Choir.

CHURCH OF CHRIST
13681 Old US-12, East
David A. Rushlow
Every Sunday—
10:00 a.m.—Church school.
11:00 a.m.—Worship service.
Nursery will be available.
6:00 p.m.—Worship service.

Every Wednesday—
7:30 p.m.—Bible Study.

**NORTH LAKE
UNITED METHODIST CHURCH**
The Rev. J. William Todd, Pastor
Every Sunday—
9:30 a.m.—Worship service.
10:30 a.m.—Sunday school.

Every Tuesday—
7:00 p.m.—Choir rehearsal.
Every Thursday—
4:00 p.m.—Children's Choir re-
hearsal.

First Wednesday—
9:30 a.m.—Jane Circle.
Second Tuesday—
UMWSSCS.

ST. MARY CATHOLIC CHURCH
Pastor
The Rev. Fr. David Philip Dupuis
Mass Schedule
Every Saturday—
4:00-5:00 p.m.—Confessions.
7:00 p.m.—Mass.
Immediately after 7 p.m. Mass—
Confession.

Every Sunday—
Winter schedule
8:00, 10:00, 12:00 noon.—Mass.
Summer schedule
7:00, 9:00, 11:00 a.m.—Mass.

**ST. BARNABAS
EPISCOPAL CHURCH**
20550 Old US-12
The Rev. C. Walton Fitch, Vicar
Telephone 426-8815

Every Sunday—
9:15 a.m.—Holy Communion,
first, third and fifth Sundays.
9:15 a.m.—Morning Prayer, sec-
ond and fourth Sundays.

**NORTH SHARON
COMMUNITY BIBLE CHURCH**
Sylvan and Washburn Rds.
The Rev. William Enslin, Pastor
Every Sunday—
10:00 a.m.—Sunday school.
(Nursery will be available.) Junior
church classes.
11:00 a.m.—Worship service.
8:00 p.m.—Senior High Youth
meeting. Youth Choir.
7:00 p.m.—Evening worship ser-
vices. (Nursery available.)
Every Wednesday—
7:00 p.m.—Bible study and pray-
er meeting. (Nursery available.)
Bus transportation available: 428-
7222.

**FIRST UNITED
PRESBYTERIAN CHURCH**
Unadilla
The Rev. T.H. Liang
Every Sunday—
9:45 a.m.—Sunday school.
11:00 a.m.—Worship service.
Every Tuesday—
8:00 p.m.—Choir practice.

**SALEM GROVE
UNITED METHODIST CHURCH**
3329 Notten Rd.
The Rev. J. William Todd, Pastor
Every Sunday—
10:00 a.m.—Sunday school.
11:00 a.m.—Worship service.
Wednesday, Sept. 5—
2:00 p.m.—United Methodist Wo-
men meet at Nadine Artz's home.
Thursday, Sept. 6—
8:30 p.m.—Administrative Board
and Council of Missionaries.

METHODIST HOME CHAPEL
The Rev. R. L. Clemans, Chaplain
Every Sunday—
8:45 a.m.—Worship service.

CHELSEA MEDICAL CENTER
Every Other Wednesday—
1:30 p.m.—Worship service.

CHELSEA BAPTIST CHURCH
337 Wilkinson
The Rev. James Stacey, Pastor
Every Sunday—
9:45 a.m.—Sunday school.
11:00 a.m.—Worship service.
Nursery care available during all
services.
6:00 p.m.—Junior and Senior
Baptist Youth Fellowship.
7:00 p.m.—Evening service.
Every Wednesday—
7:00 p.m.—Bible study and
prayer meeting.

IMMANUEL BIBLE CHURCH
145 E. Summit St.
The Rev. LeRoy Johnson, Pastor
Every Sunday—
9:45 a.m.—Sunday school, nur-
sery provided.
11:00 a.m.—Morning worship,
nursery provided.
Every Wednesday—
7:30 p.m.—Family hour, prayer
meeting and Bible study.
First Sunday of Month—
7:00 p.m.—Communion services.

Farm Machine Classes Scheduled at MSU

High school graduates interested
in working with farm machinery
can still enroll in MSU's 18 month
"earn while you learn" Farm
Equipment Service and Sales Pro-
gram beginning in September, ac-
cording to Dick Bittner, program
coordinator.

Classes begin in September and
continue until spring. April
through August is spent in place-
ment training where students work
with skilled and experienced per-
sonnel in selected equipment deal-
erships, earning wages to finance
their education.

Paper Mill Waste Makes Useful Land

An effective way of transform-
ing waste sludge from paper mills
into useful land forms has been
devised in a three-year experiment
by a Michigan State University
professor of civil and sanitary
engineering.
Dr. Orlando B. Andersland's ex-
periment centered on the concept
of a "sandwich" of layered sand
and sludge weighted down with a
load of natural soil on top.
The system allows the sand to
drain the water from the sludge,
and uses the top soil as a press
to ensure such drainage.

Michigan Tomatoes Are Plentiful in August

Backyard gardeners need not
fret if late spring frost killed
their tomato plants this season.
There are plenty of "home-grown"
tomatoes available, according to
marketing officials of the Michi-
gan Department of Agriculture.

Michigan tomato growers whose
plants were killed by the frosts
were able to replant their fields
in time for late summer har-
vest and the results are an outstand-
ing crop of fresh market toma-
toes.

Major production areas for to-
matos are Berrien and Van Bur-
en counties in southwestern Michi-
gan, and Monroe, Lenawee and
Macomb counties in the south-
eastern part of the state. The
field-grown tomato season started
in late July and will continue un-
til freezing weather. The peak of
the season is during August.

Quality is excellent and prices are
usually lowest during this time.

Michigan tomatoes are character-
ized by their superior flavor and
high quality. Production is cen-
tered on well-drained sandy
loamy soils and growers are using
the latest techniques and cultural
practices.

Tomatoes are being caged, that
is, wire cages are placed around
the plants while they're small to
give support and eliminate soil
rot and ground scars. Plants are
carefully protected from insects
and disease.

Proper irrigation is essential for
quality, attractive fruit. There-
fore, most of the commercial acre-
age is sprinkler irrigated to main-
tain an adequate level of soil
moisture. During warm dry
weather, from one to two inches
of water is required per acre.

**CHELSEA
FINANCE CORP.**
\$25 to \$1,500
**For Any
Worthwhile Purpose**
See or Call
FRANK HILL
at 475-8631
**111 PARK STREET
CHELSEA, MICH.**

REAL ESTATE ADVICE
RESIDENTIAL PROPERTIES
COMMERCIAL - INDUSTRIAL
FARMS
VACANT LANDS
SPEAR & ASSOCIATES, INC.
REALTORS
122 W. Main, Manchester Ph. 428-8388

MARIA LEHR
428-8182

LIMA TOWNSHIP PLANNED USE REPORT Of Federal Revenue Sharing Funds

The government of Lima Township plans to expend its revenue sharing allocation of the entitlement period beginning July 1, 1973 and ending June 30, 1974 in the following manner based upon an estimated total of \$3,248.00. (Account No. 23-2-981-996). Form No. 3229 filed with Department of the Treasury, Office of Revenue Sharing, 1900 Pennsylvania Ave. N.W., Washington, D.C. 20226.

(K) EXECUTIVE PROPOSAL. Check this block if this plan is
based on an executive proposal.

(L) DEBT. How will the availability of revenue sharing funds
affect the borrowing requirements of your jurisdiction?
☐ Avoid Debt Increase ☐ No Effect
☐ Lessen Debt Increase ☒ Too soon to predict effect.

(M) TAXES. In which of the following manners is it expected
that the availability of Revenue Sharing Funds will affect
the tax levels of your jurisdiction? Check as many as apply.

☐ Will enable reducing rate of major tax
☒ Will prevent increase in rate of major tax
☐ Will prevent enacting a new major tax
☐ Will reduce amount of rate increase of a major tax
☐ No effect on tax levels
☐ Too soon to predict effect

OPERATING/MAINTENANCE EXPENDITURES

Priority Expenditure Categories (A)	Planned Expenditures (B)	Percent Planned For Existing Services (C)	Percent Planned For New or Expanded Services (D)
1 Public Safety (Local Roads)	\$3,248.00	100%	%
2 Environmental Protection	\$	%	%
3 Public Transportation	\$	%	%
4 Health	\$	%	%
5 Recreation	\$	%	%
6 Libraries	\$	%	%
7 Social Services for Aged & Poor	\$	%	%
8 Financial Administration	\$	%	%
9 Total Planned Operating/Maintenance Expenditures	\$3,248.00		

(N) ASSURANCES (Refer to Instruction G)

The news media have been advised that a complete copy of
this report has been published in a local newspaper of general cir-
culation. I have records documenting the contents of this report and
they are open for public and news media scrutiny.

I assure the Secretary of the Treasury that the statutory
provisions listed in Part G of the instructions accompanying this
report will be complied with by this recipient government with
respect to the entitlement funds reported herein.

Edwin J. Coy
Supervisor

Date Published: Thursday, August 30, 1973.
Name of Newspaper: The Chelsea Standard.

CAPITAL EXPENDITURES

Expenditure Categories	Planned Expenditures F	Equipment G	Percent Planned For Construction H	Land Acquisition I	Debt Retirement J
10 Multi- Purpose and General Govt.	\$	%	%	%	%
11 Education	\$	%	%	%	%
12 Health	\$	%	%	%	%
13 Transportation	\$	%	%	%	%
14 Social Development	\$	%	%	%	%
15 Housing & Community Development	\$	%	%	%	%
16 Economic Development	\$	%	%	%	%
17 Environmental Conservation	\$	%	%	%	%
18 Public Safety	\$	%	%	%	%
19 Recreation Culture	\$	%	%	%	%
20 Hall Addition and Land Purchase	\$	%	%	%	%
21 Others (Specify)	\$	%	%	%	%
22 Others (Specify)	\$	%	%	%	%
23 Others (Specify)	\$	%	%	%	%
24 Others (Specify)	\$	%	%	%	%
25 Total Planned Capital Expenditures	\$				



WITH KITH: Putting together a prize-winning float for the Chelsea Methodist Home residents have made for the past two years is not a task to be taken lightly, but the Home residents obviously enjoy the long hours of creating the chicken wire frame with colored paper flowers. Every

afternoon there is a squad of volunteers behind the Home working on the float. Those pictured here, from left, are Mrs. Nava Prudden, Clark Renwick, Mrs. Alice Spitzer, who was elected Queen for the parade, Bert Pearson and Mrs. Susan Williams.

Methodist Home Crews Busy On Float for Saturday Parade

"I never thought I'd be a king until I got to heaven," said the Rev. George Spitzer who with his wife will reign over the Chelsea Methodist Home float in Saturday's parade. He is obviously enjoying his new rank.

His wife, Alice, was similarly pleased and "overwhelmed" when they won the election for king and queen. "I have worked on floats the last two years," said Mrs. Spitzer, "but I never thought I'd be riding on one."

The Spitzers, who have been Chelsea Home residents for six years, will be accompanied on their ride by Mr. and Mrs. Bert Pearson, residents of the Home's apartments, who were runners-up in the election.

The Home has entered prize-winning floats the last two years under the enthusiastic encouragement of activities director Kathy Glynn. This year's handwork looks once again hard to beat.

Gold praying hands in front of an open Bible is the arrangement the recreation committee decided upon to demonstrate their theme "God Is Love." The two-foot-tall hands, made from papier mache by Mildred Smith, will rise from a bed of red and white paper flowers that covers the wagon loaded each year by Harold Sias.

Everyone in the home has had an opportunity to help decorate the float. Even those residents who are bedridden can work in their rooms separating hundreds of napkins. The filmy pieces are then twisted into perky bouquets to be stuffed into the chicken wire hung on the wagon.

Much of the chicken wire was decorated inside, allowing residents who aren't particularly active to lend a hand. Finally the panels were fastened to the wagon with the help of Miss Glynn's "official carpenters," Clark Renwick and Bert Pearson.

Others were kept busy making decorations for the Chelsea Methodist Home limousine which will also appear in the parade. Those residents who will not be in the parade may view it from their special section in front of McKune Memorial Library. They'll be waiting, hoping to see the winning ribbon once again attached to their float.

FOR GREATEST VOLUME

For greatest volume when whipping cream, bowl and beaters should all be cold.

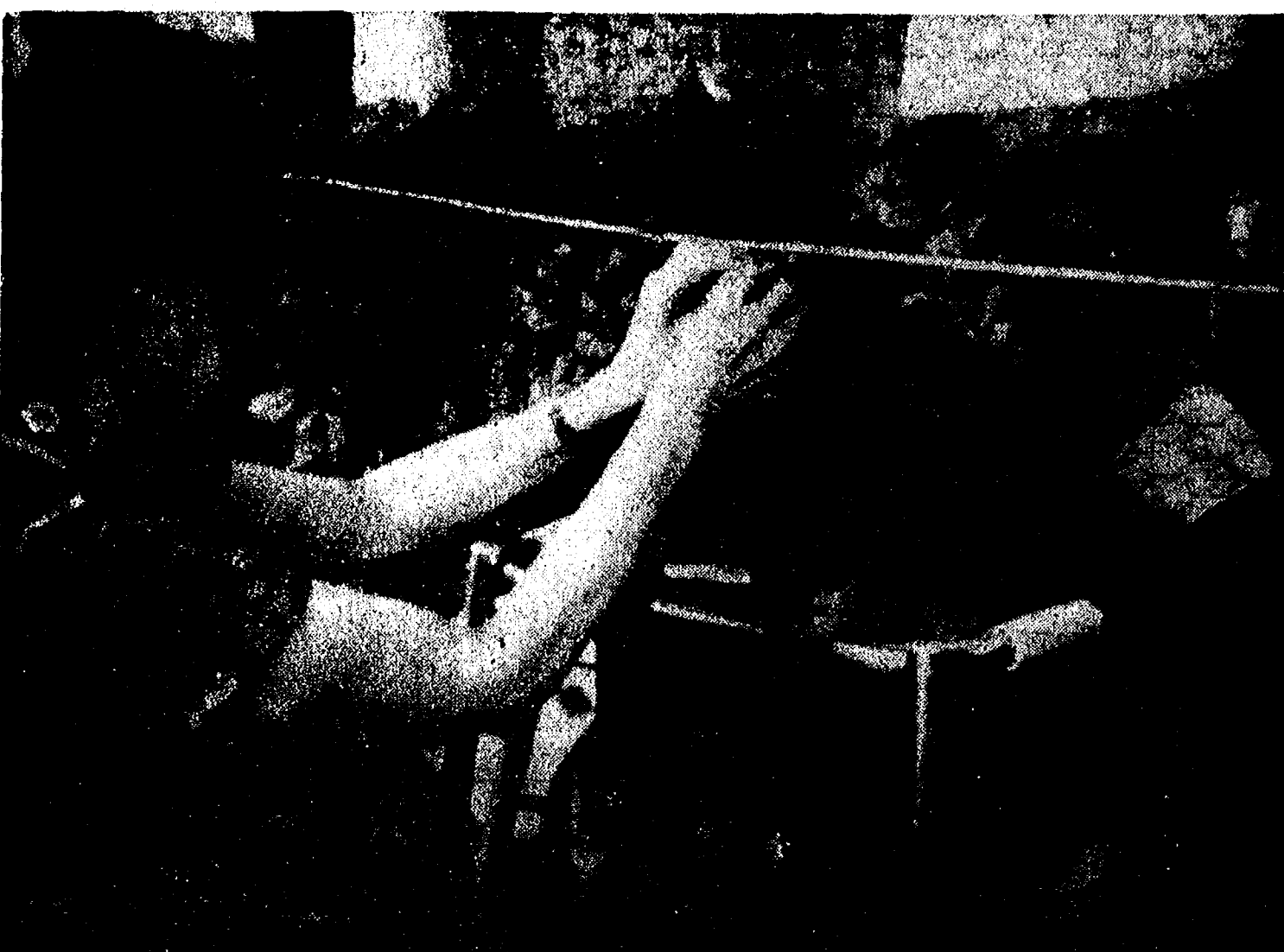


The Chelsea Standard



"DON'T JUST STAND THERE, start stuffing," say Miss Myra Snow (left) and Mrs. Ethel Stonely, two nursing patients at Chelsea United Methodist Home who ventured out to help work on the float for the Chelsea Community Fair parade

this Saturday. Behind them the Rev. George Spitzer and Mrs. Helena Schweitzer work together fastening colored napkins to the chicken wire. The Rev. Spitzer will be riding on the float, with his wife, as King and Queen.



TEAMWORK has made the many hours of work on the float at the Chelsea United Methodist Home a pleasure. Here Emma Finch (left) and Mrs. Lillie Merrill are shown working on a chicken wire panel. After the ladies had covered the panel with red and white paper flowers, it was attached

to the flat wagon Harold Sias loans to the Home each year for their float in the Chelsea Community Fair. This week more work continued on the float as a sign bearing the theme, "God Is Love," was attached and more flowers were added.

Robert Schaeffer, Jr., Beginning Classes At Alma College

Robert Arnold Schaeffer, Jr., is one of 300 Alma College freshmen beginning their programs of study this fall under a new 4-4-1 academic program.

He and other Alma students this year will also be the first to attend classes in Alma's new Academic Center which will be ready for use during the college's fall term.

Schaeffer, a graduate of Chelsea High school, is the son of Mr. and Mrs. Robert A. Schaeffer of 20450 Old US-12.

The new Alma academic program, which goes into effect when classes begin on Sept. 13, features 14-week terms in the fall and winter and a 4-week term in the spring. Most students at the college will take four courses during each of the longer terms and only one course during the shorter spring term.

With this 4-4-1 program, Alma's academic year begins in mid-September and ends in mid-May. The short spring term enables Alma students to concentrate on one subject and to participate in less conventional kinds of activities such as field work, independent study or internship in a field of special interest.

PASTA

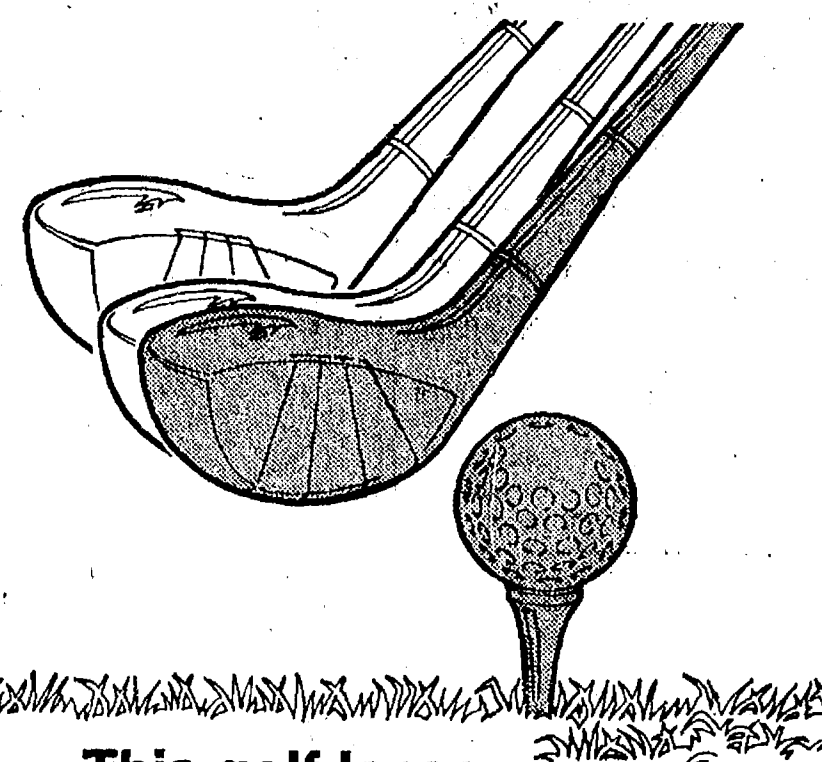
Pasta is an all-inclusive word including spaghetti, macaroni and noodles, along with many others. The products are similar, but the shape is different.

WHY?

I remained a bachelor because I'd rather wash a pair of socks than a sink full of dishes!

Persons who experience a sudden hearing loss should consult a medical ear specialist as soon as possible, warn hearing specialists. They add that individuals who have a continuing buzzing or ringing in the ears also should obtain medical advice.

Telephone Your Club News To 475-1371



This golf lesson could save you thousands

You know, you can holler "Fore!" for dear life, but still be liable if you hit somebody on the links this weekend! In fact, any accident while hunting, boating, fishing, skiing, or any other sports, could put you in court and cost you thousands of dollars! You may not be able to avoid a golf accident...or a lawsuit...but you sure can avoid paying all that money in court. You can protect yourself and members of your family before the first tee with "altogether" personal liability coverage which is available in many Auto-Owners policies.

it's better altogether

A. D. MAYER AGENCY, INC.

115 PARK ST., CHELSEA
BOB BARLOW, AGENT
PHONE 475-2030

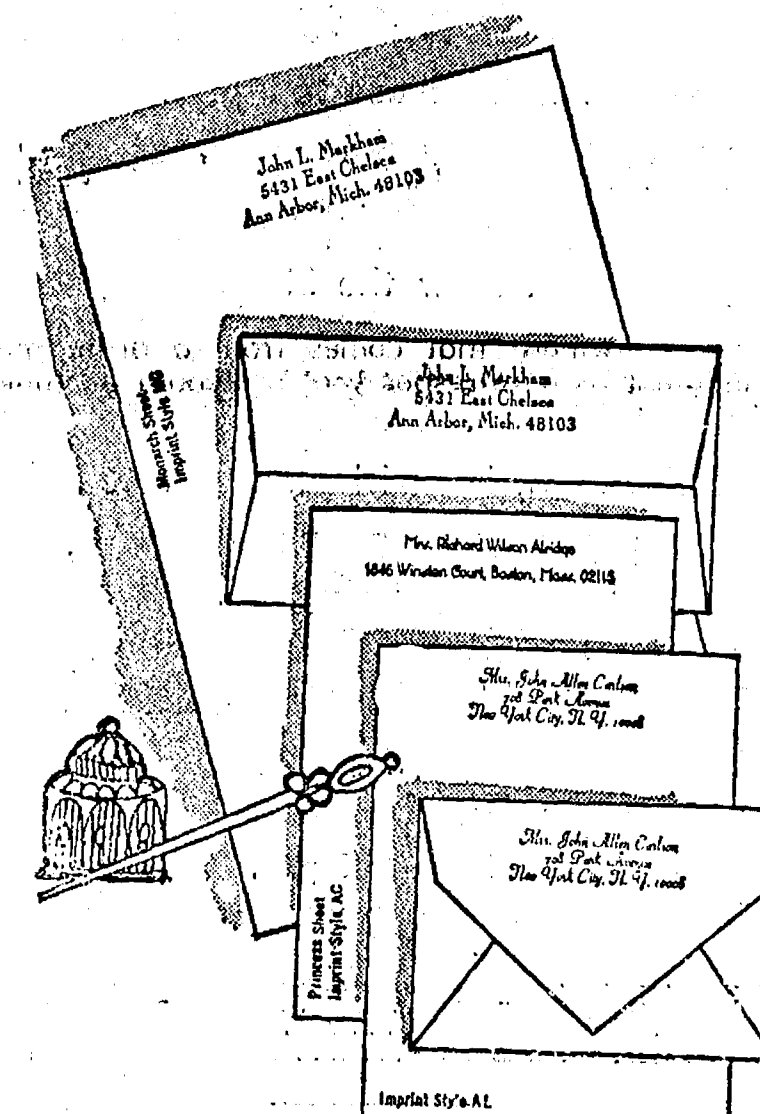


Auto-Owners Insurance
LifeHomeCarBusiness

SOMETHING FOR EVERYONE: As the Chelsea Community Fair parade approaches, the Chelsea Methodist Home is a hive of activity. Even those like Miss Adeline Bellamy, who are not able to get out much are able to help by doing work in their rooms. Here Miss Bellamy separates napkins to be used on the float.

Want to sell a car? Try a Standard Want Ad!

The Chelsea Standard



AUGUST SALE - SAVE \$4⁵⁰

**Double the Usual Quantity
Rytex Charter Club Vellum**

150 princess sheets,
100 matching envelopes or
100 monarch sheets,
100 matching envelopes
Now \$5⁰⁰
(regularly \$9.50)

Enjoy the advantage of personalized quality-vellum paper at plain paper prices. Smooth, distinctive sheets in white or blue with your name and address in rich blue, dark grey or black ink. Choice of three smart printing styles.

Bonus Value

An additional 50 matching unprinted sheets for use as second pages (regularly \$1.50) now only \$1 with your order.

MAIL ORDER COUPON

THE CHELSEA STANDARD
CHELSEA, MICH. 48118

RYTEX CHARTER CLUB VELLUM: _____ double quantity boxes at \$5.00 per box.

SPECIAL BONUS ☐ (check) 50 extra Plain sheets (with each box) at \$1.00 per box

Imprint Name _____

Street _____

City _____ State _____ Zip _____

Check **PRINCESS SIZE:** ☐ White (7000) ☐ Blue (7050)

choice: **MONARCH SIZE:** ☐ White (7100) ☐ Blue (7150)

Ordered by: _____

Street _____ Apt. _____

City _____ State _____ Zip _____

Account No. _____ Tel. _____

☐ Charge ☐ Check or M.O. enclosed \$ _____

Sorry, no C.O.D.'s (Please include Michigan State Sales Tax)

LARRY'S ROADSIDE MARKET

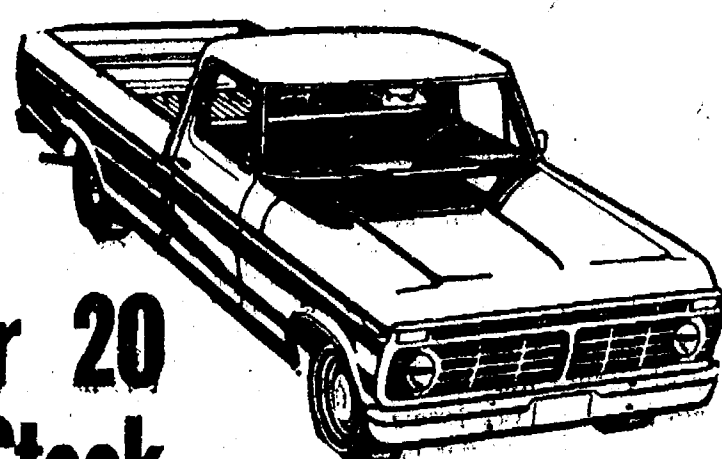
Now Open Every Day!

**Farm Fresh Fruits and Vegetables
Bread - Milk - Eggs - Pop**

Open 9 a.m. to 9 p.m., 7 days a week

Halfway between Chelsea and Manchester on M-52,
1/2 mile south of Grass Lake Rd.

10th ANNUAL PICK-UP SALE



**Over 20
In Stock**

A full line of Pick-ups to choose from, including F-100's, F-250's, Rancheros and Broncos. Your choice of colors and equipment such as 2-tone, V-8s, automatic transmissions, power steering, camper specials and many other options.

**1973 MODEL-END
BARGAIN PRICED**



SEE
John Popovich
Don Moore

The Little Profit saves you more than anything you ever bargained for

SEE
Lyle Chriwell
Don Lawhorn

PALMER

Since April 1912



475-1301

Open Monday thru Friday 9:00 a.m. Sat. 10:00 a.m. Sun. 11:00 a.m.

FEED FOR PROFIT

Feed Formulas Tested, Proved To Get Results

Extra proteins, vitamins and minerals in proper balance, scientifically blended, make our feeds real profit producers for you.

Farmers' Supply Co.

Phone GR 5-5511

High School Faculty Changes

Changes in the high school faculty will be made in the coming year. The following are the changes:

Women Needed in Space Program?

Women are needed in the space program. The following are the changes:

Public Invited!

BEEF & PIG ROAST

SUNDAY, SEPT. 2

Serving Noon to 9 p.m.

7341 NORTH TERRITORIAL RD.
DUNLAVY FARMS

Follow the Signs

\$3 per plate

Includes corn, baked beans, potato salad.

FREE MUSIC

By Three Bands

- ★ This, That and the Other Thing
- ★ Johnny Weber's Band
- ★ Hillbilly Band

Noon to 9 p.m.

GAMES

VOLLEY BALL - HORSESHOES - BASEBALL
FOOTBALL - TUG-OF-WAR ACROSS THE POND

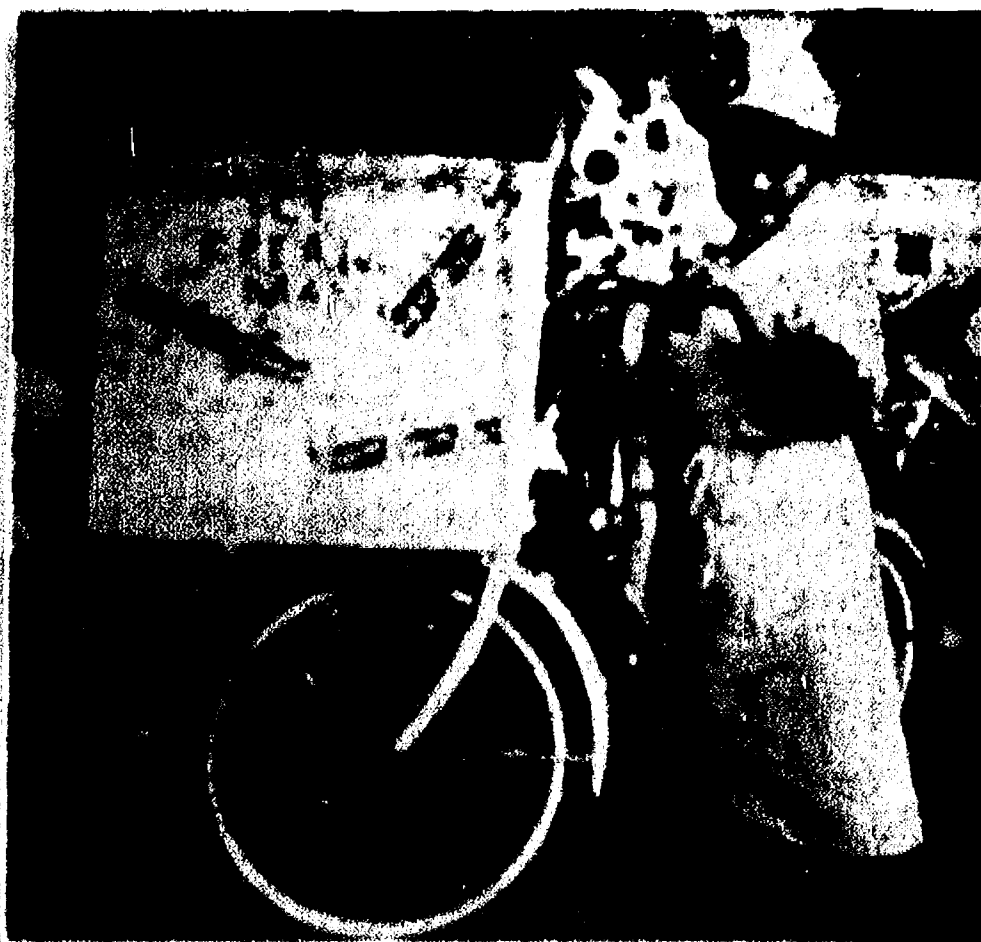
FREE PARKING

MUSIC - GAMES

ONE-DAY BEER LICENSE

Sponsored By

Dexter K. of C.



ICE CREAM MAN: Had Robbie Riemenschneider had a stack of road snacks in his freezer, he would have been the most popular kid in the Children's Parade Tuesday evening. Instead, he rated a second prize in the three-, four-, and five-year-old age group judging for the effectiveness of his costume. After riding all the way to the fairgrounds from the municipal parking lot with the large box attached to his bike, he learned that it's easier to eat ice cream than to peddle it.



YO SOY MEXICANO: said Todd Nagel, Tuesday, with his Mexican man costume worn in the Children's Parade. His sombrero and brightly colored "saddle cloth" earned him honorable mention in the judging of the three-, four-, and five-year-olds.

Beach Staff Changes

There has been some rearranging going on in the Beach Middle school faculty. Some new faces will join the staff, and others, who are not completely new to the system, will take on new jobs.

The familiar faces belong to Mrs. Elizabeth Roduazo, Miss Truoke Amiegh, Mrs. Lucinda Bradbury and David Knisely.

Mrs. Roduazo is transferring from North Elementary school to Beach to join the science department there. She will teach sixth and seventh grade science.

Miss Truoke Amiegh, who worked last year on a part time basis, will be a full time music teacher this year as she takes over direction of the string program. Miss Amiegh has earned her masters degree in music at the University of Michigan.

Miss Lucinda Bradbury is known to many Chelsea students as a substitute, who has stepped in many times in the past few years. She will now teach seventh and eighth grade English. A graduate of Wittenberg University, Mrs. Bradbury has done advanced work at Eastern Michigan University.

One additional change among the old familiar faces is that David Knisely has been appointed to the position of reading specialist. He has done advanced work in reading at Eastern Michigan University and has taught eighth grade English at Beach school for the past few years.

New to the staff are Mrs. Nola Borders, John Hyatt and Mrs. Jane Lehmann.

Mrs. Borders, a graduate of the University of Louisville, will be teaching seventh and eighth grade science. Since graduating in 1963 she has earned 30 hours beyond her bachelor's degree, while teaching in California, Kentucky and Ohio.

John Hyatt comes to Chelsea from the Monroe Public Schools where he was a middle school counselor. Hyatt has a masters degree in counseling from the University of Michigan.

Mrs. Jane Lehmann will take over as the new Instructional Materials Director of Beach Middle school's library. A graduate of Eastern Michigan University, Mrs. Lehmann has done advanced work at Western Michigan University. She was previously the media specialist at Marcellus.

RETURN ON INVESTMENT?
My wife has not only kept her girlish figure, she's doubled it!

24 Years Ago...

(Continued from page two)
Mrs. Wellhoff died about 20 years ago.

34 Years Ago...

Thursday, Aug. 31, 1939—The second annual picnic of the employees of Federal Screw Works with their families was held Sunday at Dexter Huron Park. About 215 partook in the dinner at 1 p.m.

A real improvement to the appearance of Main St. is being made by the remodeling of the Merkel building, formerly occupied by the Princess Theatre. A new floor has been constructed, the walls are being refinished, and a face brick and plate glass front will complete the reconstruction.

The teaching staff for the Chelsea public schools is complete for the school year of 1939-40. It will be as follows: Superintendent, Albert C. Johnson; principal and science, Vernon W. Downing; vocational agriculture and biology, Thomas Bust; commercial, Josephine Renski; English, speech and debate, Florence Efty; English and Latin, Mabel Pawloski; social science and athletic coach, Charles Cameron; home economics, Elizabeth Muzzall; eighth grade band and orchestra, Robert Dunstan; seventh grade and social science, Mabel Fox; sixth grade, Althea Canfield; fifth grade, Ida Brown; fourth grade, Leda Lindenschmidt; third grade, Betty Jean Schuch; second grade, Mrs. E. R. Dancer; first grade, Myrthe Achley; kindergarten, and vocal music, Evelyn Sprague.

Hauling of gravel to the Cavanaugh Lake Rd. preparatory to the work of blacktop surfacing this highway, was started last week by the County Road Commission. Placing of the gravel was started at the Michigan Central tracks just west of Chelsea and was scraped to the center of

CALL OR STOP IN

CHELSEA GLASS WORKS

WORKMANSHIP AND MATERIALS FULLY GUARANTEED
Open Daily 8 a.m. to 5 p.m.; Sat., 8 a.m. to 1 p.m.

140 W. Middle, Chelsea Phone (313) 475-8667

WE REPAIR AND REPLACE:

- ★ STORE FRONTS
- ★ FURNITURE TOPS
- ★ SHOWER DOORS
- ★ THERMOPANES
- ★ AUTO GLASS - Including Windshields
- ★ MIRRORS
- ★ PATIO DOORS
- ★ TUB ENCLOSURES

Free Pick-up and delivery on auto work.

Storm Door & Window Reglazing & Screens
COMMERCIAL BUILDINGS OR RESIDENTIAL
PROMPT SERVICE REASONABLE PRICES

Want to sell a car? Try a Standard Want Ad!

Be a good neighbor... support

OPERATION IDENTIFICATION



See me for complete Operation Identification home protection materials. They're yours without cost.

Identification of personal belongings and household articles can help deter the home burglar. That's why I'm joining local law enforcement officials in urging you to participate in Operation Identification. See me for all the materials you'll need.

WALLACE WOOD, C.L.U.
105 S. MAIN, CHELSEA
PHONE 475-1511

Like a good neighbor, State Farm is there.

STATE FARM INSURANCE COMPANIES
Home Offices: Bloomington, Illinois

LIMA TOWNSHIP PLANNED USE REPORT Of Federal Revenue Sharing Funds

The government of Lima Township plans to expend its revenue sharing allocation of the entitlement period beginning Jan. 1, 1973 and ending June 30, 1973 in the following manner based upon an estimated total of \$5,645. (Account No. 23-3-981-995). Form No. 3229 filed with Department of the Treasury, Office of Revenue Sharing, 1900 Pennsylvania Avenue N.W., Washington, D.C. 20226.

(K) EXECUTIVE PROPOSAL. Check this block if this plan is based on an executive proposal.

(L) DEBT. How will the availability of revenue sharing funds affect the borrowing requirements of your jurisdiction?

☐ Avoid Debt Increase ☐ No Effect ☐ Too soon to predict effect

(M) TAXES. In which of the following manners is it expected that the availability of Revenue Sharing Funds will affect the tax levels of your jurisdiction? Check as many as apply.

☐ Will enable reducing rate of major tax ☐ Will prevent increase in rate of major tax ☐ Will prevent enacting a new major tax ☐ Will reduce amount of rate increase of a major tax ☐ No effect on tax levels ☐ Too soon to predict effect

OPERATING/MAINTENANCE EXPENDITURES				CAPITAL EXPENDITURES			
Priority Expenditure Categories (A)	Planned Expenditures (B)	Percent Planned For Maintenance of Existing Services (C)	Percent Planned For New or Expanded Services (D)	Expenditure Categories (E)	Planned Expenditures (F)	Percent Construction (G)	Planned For: Acquisition (H) Debt (I)
1 Public Safety (Local Roads)	\$4,566.00	100%	100%	10 Multi-Purpose and General Govt.	\$	%	%
2 Environmental Protection	\$	%	%	11 Education	\$	%	%
3 Public Transportation	\$	%	%	12 Health	\$	%	%
4 Health	\$	%	%	13 Transportation	\$	%	%
5 Recreation	\$ 500.00	%	100%	14 Social Development	\$	%	%
6 Libraries	\$ 579.00	100%	%	15 Housing & Community Development	\$	%	%
7 Social Services for Aged & Poor	\$	%	%	16 Economic Development	\$	%	%
8 Financial Administration	\$	%	%	17 Environmental Conservation	\$	%	%
Expenditures	\$5,645.00			18 Public Safety	\$	%	%
				19 Recreation	\$	%	%
				20 Hall Addition and Land Purchase	\$	%	%
				21 Others (Specify)	\$	%	%
				22 Others (Specify)	\$	%	%
				23 Others (Specify)	\$	%	%
				24 Others (Specify)	\$	%	%
				25 Total Planned Capital Expenditures	\$	%	%

I have advised a local newspaper and the news media of the contents of this report. Furthermore I have records documenting the contents of this report and they are open for public and news media scrutiny.

Edwin J. Coy
Supervisor

Date Published: Thursday, April 5, 1973 and August 30, 1973
Name of Newspaper: The Chelsea Standard.

Everything You Always Wanted to Know About Sex English But Were Afraid to Ask

Is John Wayne's film voice natural?
Do Black Americans speak a dialect?
What about Shakespeare's language as English?
Do social situations turn you off—because you're afraid to speak?

Learn "the real facts" about how language works—the truth about English! Enroll now in English 230, "Nature and History of the English Language" — at

WASHTENAW COMMUNITY COLLEGE

Fee: \$37.50*
Time: 5:30-7:00 p.m., Tuesday & Thursday
Register now - On campus!
For information, call 971-63000, Ext. 451
Washtenaw Community College - The Learning Center
*In-district tuition.

PALMER

Think About Us for High Quality TIRES at DISCOUNT PRICES

Ask about our Free Replacement Guarantee

Little Profit

The Little Profit saves you more than anything you ever bargained for

222 S. MAIN ST.
Since April, 1912
475 - 1301

Amateur Ladies

Finish Summer Golf Activities

Chelsea Ladies Golf Association members are finishing up their season with a series of tournaments and social events. The association is planning a series of events for the fall, including a tournament on September 10 and a social event on September 15. The association is also planning a series of events for the winter, including a tournament on November 10 and a social event on November 15. The association is also planning a series of events for the spring, including a tournament on March 10 and a social event on March 15.

Carmen's Jorazky Engagement Told

Carmen Jorazky, daughter of Mrs. Jorazky, is engaged to be married to Mr. Jorazky. The engagement was announced by Mrs. Jorazky. The couple are planning to be married in the fall. The wedding will be held at St. Mary's Church. The bride will be wearing a white dress. The groom will be wearing a suit. The couple will have a reception at the home of Mrs. Jorazky.

TRUE OR FALSE?

When a woman driver is caught, the car must be paid for.



Mrs. John Raymond Hall

Ellen Marie Merkel, John R. Hall Married at St. Mary's Church

Ellen Marie Merkel became the bride of John Raymond Hall Friday in an evening ceremony held at St. Mary's church. The Rev. Fr. Melville Umberto of St. Louis school performed the service. Parents of the bride are Mr. and Mrs. George A. Merkel of Chelsea. The bridegroom is the son of Mrs. Russell Hall of Ypsilanti and the late Mr. Hall. The bride, who designed the gown worn by all her attendants, made her own gown out of white lace, laced with white ribbons. She carried white roses and Stephanotis. For her matron of honor, Mrs. Charles Montgomery of Manchester, her sister, the bride made another white lace gown but laced it with lavender ribbons. Also attending as bridesmaids were the other Merkel sisters, Ann, Beth, Theresa and Margaret Mary. Their white lace dresses were accented with ribbons of pink, green, yellow and blue. Gene L. Hall of Lapeer was his brother's best man as Michael Merkel, the bride's brother, John Jannucci of Detroit, Doug McCully of Belleville and Thomas Dushibor of Taylor showed guests to their seats. Mary Ann LaRose of Ann Arbor played the organ. The mother of the bride chose a pink and white long dress which she wore with silver accessories. The ensemble was accented with a corsage of pink rose buds and white baby's breath. Mrs. Hall was dressed in a teal blue long dress with matching accessories. Her corsage was white orchids. The couple greeted guests at the Fair Service Center at a reception given by the bride's parents. Mary Griffith of Pontiac poured the coffee while Mary Paul cut the cake. Judy Jepson of Pontiac was in charge of the guest book. The newlyweds are vacationing in Montreal before returning to their new home at 225 1/2 W. Middle St., Chelsea. Mrs. Hall is a graduate of Chelsea High and Madonna College. She is employed as a Medical Technologist at Chelsea Medical Center. Her new husband is a graduate of Ypsilanti high school and the University of Michigan. After completing his military service in Korea, he is returning to graduate school at the University of Michigan.

CHEESE GOING UP!

In the past 50 years, per capita consumption of cheese has gone from four pounds a year to twelve pounds.

USED CARS

Some used cars are good for years of travel-free care!

What's Cooking In Michigan

By Larroette Trimm
Michigan Dept. of Agriculture
Marketing Information Specialist

Fresh Michigan vine-grown tomatoes are a harvest time bargain, according to Marketing Officials of the Michigan Department of Agriculture, and thrifty consumers are buying them in quantities for canning and cooking.

Tomatoes can be easily processed at home. You'll need about three pounds of fresh tomatoes (about nine medium-sized ones) per quart. You can also make your own juice, catsup and puree.

For a refreshing late summer luncheon, serve a fresh corn, tomato and ham salad. Cook 6 ears of fresh corn on the cob until tender, remove from water and cool. Cut corn off the cob and combine with 2 cups diced ham, one diced green pepper, 3 diced fresh Michigan tomatoes, salt, pepper and mayonnaise. Toss lightly. Serve on lettuce and garnish each serving with a slice of hard-boiled egg. To complete the meal, serve hot rolls and butter, and a wedge of chilled Michigan cantaloupe for dessert.

Try stuffing firm tomatoes with a combination of diced cooked potatoes, diced celery, tuna fish, onion, salt, pepper, lemon juice, mayonnaise and fresh dairy sour cream. Serve as a main dish salad on lettuce. To prepare the tomatoes, wash them, cut a slice from the stem end of each, and scoop out the inside.

Colache is another savory tomato dish. It's summer squash, corn, and fresh tomatoes cooked Mexican style. Cut kernels from 4 ears of fresh corn. Wash and slice 4 medium summer squash. Dice 3 medium tomatoes. Sauté 1/4 cup chopped onion in butter in a skillet. Add vegetables and season with sugar, salt, pepper and oregano. Cover and cook slowly 20 minutes or until thickened. Serve hot.

Thought For Food

MEATS FOR OUTDOOR COOKS

Supplies of all meats are not expected to increase much during the summer months and shopping for lower cost items will continue to be a challenge.

But, if you are aware of all the meats that can be deliciously prepared outdoors and take advantage of weekly supermarket specials, you can have an enjoyable barbecuing season within the average family budget.

Steaks, chops, franks and hamburgers will always be popular outdoor fare, but there are many other meats to choose. Some of these cuts are more costly by the pound, but are good buys on a cost-per-serving basis.

For the grill try marinated chuck steak, sausage patties, ham steaks or slices, knockwurst, slices of smoked boneless pork shoulder roll, and thick liver steaks. A grill with a cover will accommodate complete outdoor meals. For this type of outdoor cooking select chuck pot roast, beef round roast, sirloin tip or rump roast, corned beef and bone-in or boneless pork roast. Meat loaves, casseroles, and stews can also be prepared in this type of grill. All of these can be turned into soups of tempting dishes.

Food Coupons Now Good for Imported Foods

Food coupons issued by the United States Department of Agriculture Food and Nutrition Service are now good for all food intended for human consumption.

A recent amendment to the Food Stamp Act lifted the prohibition against the purchase of imported foods with food coupons. The act has also been amended to make certain garden seeds and plants eligible under the food coupon program. Garden seeds and plants are defined as eligible if they are used in gardens to produce food for the personal consumption of the eligible household.

SENIOR CITIZENS

Nineteen members attended the regular monthly business meeting of the Senior Citizens held at the Korner House, Aug. 28.

Mrs. Zeta Hafner and her committee completed six lap robes and gave them to the Cedar Knoll Rest Home.

There will be no Fun Night this Friday, Aug. 31, because of the Chelsea Fair.

Committee for the Social Party, Sept. 6, is Thelma and Norman Elsemann. The birthday committee for Sept. 20 is Mrs. Zeta Hafner, Katherine Kusterer and Dorothy Elsemann.

Subscribe today to The Standard!

Magic Mirror Beauty Salon

Open Tuesday thru Friday
9 a.m. to 9 p.m.
Saturday, 8 a.m. to 3 p.m.

PHONE 665-0816



Mr. and Mrs. Carl D. Kennel, Jr.

Heidi Sprague, Carl D. Kennel, Jr., Wed Saturday in Tipton Church

Miss Heidi Gayle Sprague and Carl David Kennel, Jr., were united in marriage, Aug. 18, at 7 p.m. ceremony, at Tipton Community church in Tipton. The Rev. Max Bailey officiated.

Miss Sprague is the daughter of Mr. and Mrs. James Sprague of 3490 Clear Lake Rd., Grass Lake. Mr. Kennel's parents are Mr. and Mrs. Carl Kennel of Tecumseh.

Miss Linda Jennings of Chelsea and Miss Kathy Ellis of Ann Arbor played baroque duets for flute preceding the ceremony. Soloist Rod Fraser of Ypsilanti sang "The Lord's Prayer" and Miss Susan Stahl played the organ.

The bride was attired in a gown of white organza trimmed at the sleeves, bodice and hem with lace. Her headpiece was a white bow with daisies and baby's breath. The same floral theme was carried out in the wedding bouquet.

The maid of honor was Miss Christine Marsh of Pinckney. She wore a long turquoise gown with white accents at the sleeves and neckline.

Collins - Congelosi Vows Spoken Recently at Methodist Church

Newlyweds Mr. and Mrs. David S. Congelosi have settled in Mishawaka, Ind., where the bridegroom, the son of Mr. and Mrs. Andrew V. Congelosi of Grand Rapids, is employed with Georgia-Pacific. His bride, the former Brenda M. Collins of 203 Madison St., Chelsea, will be teaching second grade in Gallien township in September.

They were married Aug. 11, at 2 p.m., in the First United Methodist church of Chelsea. Seventy-five guests were present to witness the Rev. Clive Dickins conduct the ceremony.

Given away by her father, Nathan Collins, Brenda wore a chiffon and satin floor-length gown. A white lace pattern covered the bodice, sleeves and hemline. The same pattern was echoed in the train and in the headpiece that held a finger-tip veil. Her flowers were white carnations and white sweetheart roses.

The matron of honor Mrs. Kathleen Phelps of San Antonio, Tex., was dressed in a brown and white dress fashioned in the empire style. She carried tangerine and yellow carnations.

Mrs. Nathan Collins chose a sleeveless floor-length gown with a purple, pink and blue floral design. Mrs. Andrew Congelosi's

dress was pink and orange. Both ladies wore pink sweetheart roses.

Eric Anderson of Grand Rapids, the bridegroom's hometown, was best man. The bride's brothers, Ron and Don Collins were ushers.

A reception followed the ceremony in the church social center. Miss Pamela Arnholt of Detroit and Miss Gail Buckham of Kalamazoo served cake and ice cream while Miss Rita Weisberger and Miss Eleana Silk, both of Southfield, poured the punch and coffee.

As the couple left for their wedding trip to Grand Haven, the bride was dressed in a double knit two-piece outfit trimmed in white lace. She wore a corsage of white sweetheart roses from the bride's bouquet.

The bride is a graduate of Michigan State University. She received her Elementary Education degree in June. Her husband is also a Michigan State University graduate. He finished his course in December, 1972 with a degree in history.

Hearing losses among young children frequently are difficult to detect because the youngsters often become adept at lip reading and picking up other visual clues, according to health officials.

Barbara Boylan To Be Included In Who's Who Among High Schools

Barbara L. Boylan, a 1973 graduate of Chelsea High school, was recently notified that she is to be featured in the seventh annual edition of Who's Who Among American High School Students, 1972-73, the largest student award publication in the nation.

Students from more than 18,000 public, private, and parochial high schools throughout the country are recognized for their leadership in academics, athletics, activities or community service in the book. Less than two percent of the junior and senior class students nationwide are awarded this recognition.

Barbara is the daughter of Mr. and Mrs. Keith Boylan, 245 Park St.

While in high school she was active in student council, debate, National Honor Society, trip club and school musicals. She was also a class officer and made the honor roll each marking period.

Awards bestowed upon her include the Student Council Award, Kiwanis Good Citizenship Award and Most Representative Senior Girl Award.

In addition to having her biography published in the book, Barbara will also compete for one of ten \$1000 scholarship awards funded by the publishers and will be invited to participate in the firm's annual "Survey of High Achievers" later in the academic year.

Barbara plans to attend Michigan State University to study Medical Technology. She leaves for school Sept. 16.

BIRTHDAY DINNER

Mrs. Selma Rowe will be celebrating her 78th birthday at Ranck's Green Meadows Home in Stockbridge, Sept. 7.

She will be honored Sunday, Sept. 9, with a family dinner at Mrs. Ella Hamill's Grass Lake home. Relatives from Southfield, Ann Arbor, Chelsea and Grass Lake will attend. Mrs. Rowe's twin sister, Sarah Benter will also be honored at the party.

Telephone Your Club News To 475-1371



BARBARA L. BOYLAN

CONSUMERS' CORNER

CERTAIN PLASTICS ARE FIRE HAZARDS

The Federal Trade Commission (FTC) is claiming that certain plastics, which have been marketed as "non-combustible," are serious fire hazards. The charge is made in a proposed class-action complaint against a number of producers and marketers of cellular (or foamed) polyurethane and all forms of polystyrene. These plastics are commonly used in the construction and home furnishings industries for insulation, furniture cushioning and bedding, panels and siding, pipes, plumbing and lighting fixtures and furniture.

The FTC's action is not intended to remove these plastics from the market. Rather, the intent is to have producers adequately warn buyers and users that the products are combustible and that precautions should be taken in installing and using products made of these materials. Plastic foam, for instance, is used for house insulation and presents a hazard only if users do not realize that the material requires a fire-resistant covering.

VILLAGE BEAUTY SALON

LORETTA JONICE - CAROL - SUE
107 N. MAIN - PHONE 475-1671

Beginning Sept. 10, we will be open
Mondays from 8 a.m. to 8 p.m.
Evenings By Appointment

Back to School SPECIALS

BIG BELL WRANGLERS

Boys sizes 8 thru 18

ONLY \$5.52

LONG SLEEVE SHIRTS

Boys sizes 8 thru 18
ONE LOT - SPECIAL BUY

ONLY \$2.82

BIG BELL WRANGLERS

29 thru 38 waist

SPECIAL \$6.92

Shop Dancer's

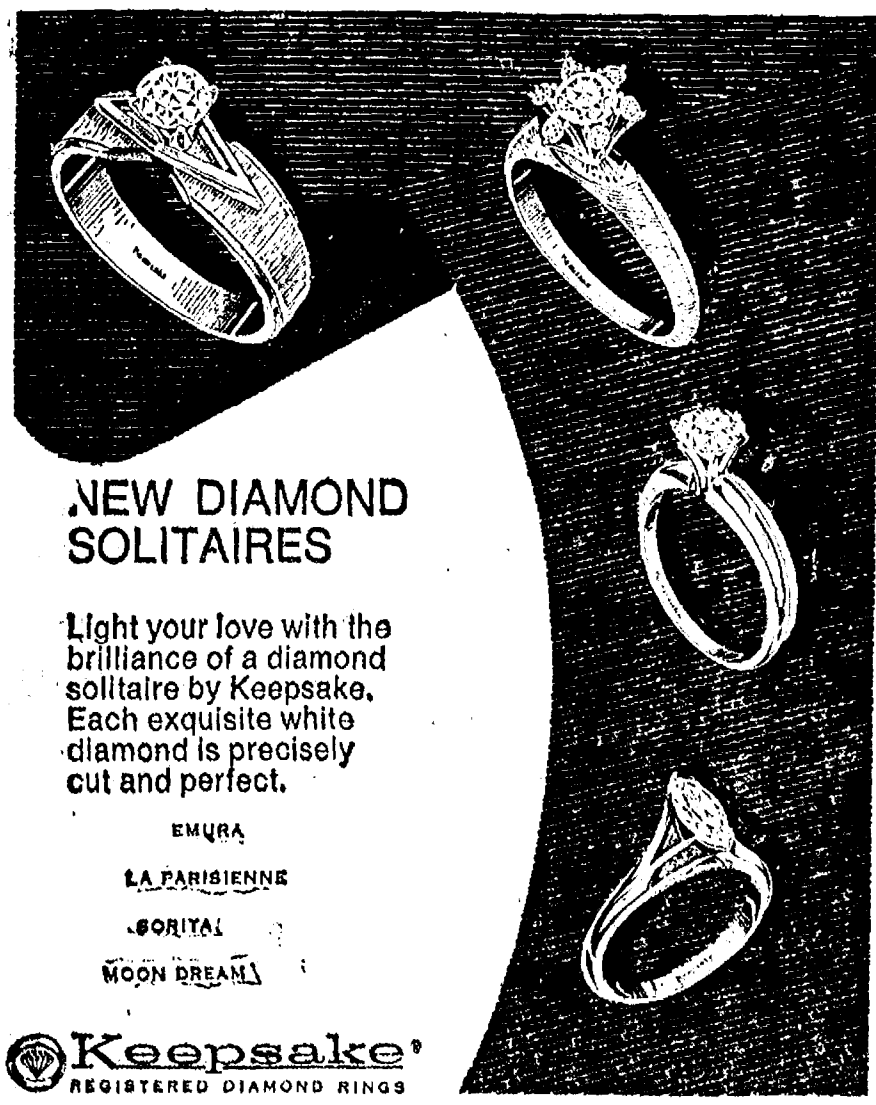
for All Your

BACK-TO-SCHOOL

WEAR

DANCER'S

Chelsea's Friendly Dept. Store



NEW DIAMOND SOLITAIRE

Light your love with the brilliance of a diamond solitaire by Keepsake. Each exquisite white diamond is precisely cut and perfect.

EMURA
LA PARISIENNE
SORITAL
MOON DREAM

Keepsake REGISTERED DIAMOND RINGS

WINANS JEWELRY

Rings enlarged to show detail. Trade-Mark Reg.

MOVING SALE

Thurs., Aug. 23 thru Saturday, Sept. 1

10% OFF ALL ITEMS IN STORE

Including yarns, hooked rugs, needlepoint and crewl kits.

20%-50% OFF Many Other Items

which will include

CANDLES - BEADS - PAPER PLATES & NAPKINS
STUFFED ANIMALS - COOK BOOKS
POSTERS & PATCHES, etc.

TAILFEATHER BOUTIQUE

A FUN PLACE TO SHOP

Phone 475-2512

